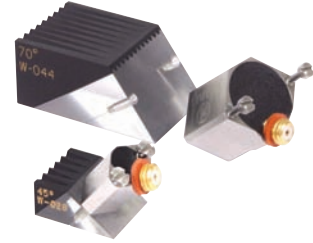
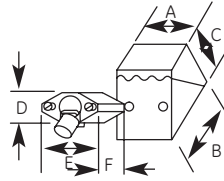


Small Angle Beam Transducers—North American Standards

Type MSWS

Replaceable Wedge .25 in (6 mm)												
Wedge Angle	A		B		C		D		E		F	
	mm	in	mm	in	mm	in	mm	in	mm	in	mm	in
45°	11.9	.47	15.2	.60	7.6	.30	7.9	.31	12.2	.48	8.6	.34
60°	11.9	.47	16.5	.65	8.9	.35	7.9	.31	12.2	.48	8.6	.34
70°	11.9	.47	17.8	.70	9.7	.38	7.9	.31	12.2	.48	8.6	.34
90°	11.9	.47	22.9	.90	9.7	.38	7.9	.31	12.2	.48	8.6	.34

Replaceable Wedge .50 in (13 mm)												
Wedge Angle	A		B		C		D		E		F	
	mm	in	mm	in	mm	in	mm	in	mm	in	mm	in
45°	18.5	.73	24.4	.96	10.7	.42	14.2	.56	18.5	.73	12.7	.50
60°	18.5	.73	27.4	1.08	12.7	.50	14.2	.56	18.5	.73	12.7	.50
70°	18.5	.73	29.5	1.16	13.7	.54	14.2	.56	18.5	.73	12.7	.50
90°	18.5	.73	39.6	1.56	14.7	.58	14.2	.56	18.5	.73	12.7	.50



Miniature Angle Beam Transducers—Type MSWS (Captive Screw Mount)

Freq. (MHz)	Element Ø		Order Codes			Freq. (MHz)	Element Ø		Order Codes		
	mm	in	Gamma Series	Standard Wedge (W = 118-340)	Accessories		mm	in	Gamma Series	Standard Wedge (W = 118-340)	Accessories
1.0	13	.500	241-580	W-040 45° W-042 60° W-044 70° W-046 80° W-048 90°		5.0	6	.250	224-580	W-028 45° W-030 60° W-032 70° W-034 80° W-036 90°	
2.25	6	.250	222-580	W-028 45° W-030 60° W-032 70° W-034 80° W-036 90°	Cables BNC 118-140-012	10.0	13	.500	244-580	W-040 45° W-042 60° W-044 70° W-046 80° W-048 90°	Cables BNC 118-140-012 LEMO-1 118-140-022
3.5	13	.500	242-580	W-040 45° W-042 60° W-044 70° W-046 80° W-048 90°	LEMO-1 118-140-022 Wedge Couplant 118-300-740	10.0	6	.250	226-580	W-028 45° W-030 60° W-032 70° W-034 80° W-036 90°	Wedge Couplant 118-300-740
3.5	6	.250	223-580	W-028 45° W-030 60° W-032 70° W-034 80° W-036 90°		10.0	13	.500	246-580	W-040 45° W-042 60° W-044 70° W-046 80° W-048 90°	
3.5	13	.500	243-580	W-040 45° W-042 60° W-044 70° W-046 80° W-048 90°		10.0	6	.250	243-580	W-040 45° W-042 60° W-044 70° W-046 80° W-048 90°	

Note: Standard wedge angles are specified for carbon steel. Custom configurations are available by special order.

